

Answers: 12.3.1.5 Lab - Configure the Firewall in Windows 7 and Vista

Introduction

In this lab, you will explore the Windows Firewall and configure some advanced settings.

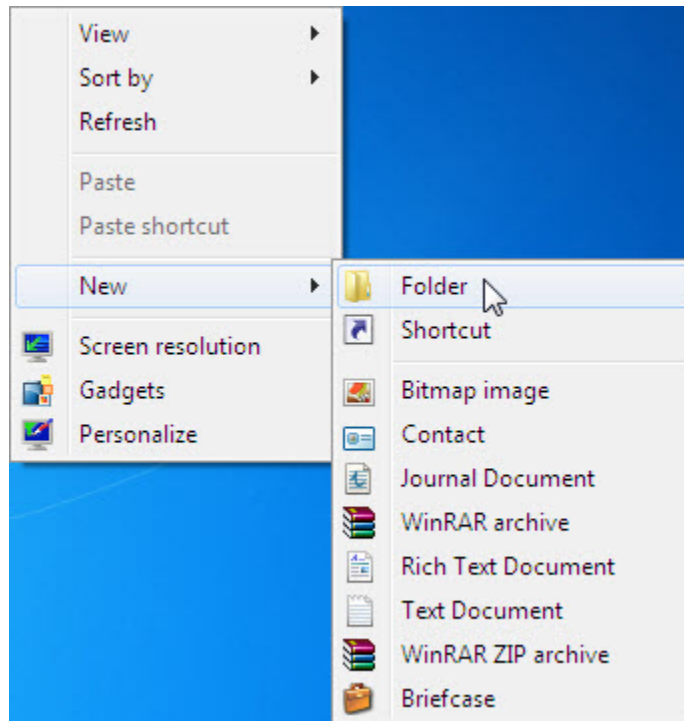
Recommended Equipment

- Two computers directly connected or connected on a network
- Windows installed on both computers
- Computers are in the same workgroup and share the same subnet mask

Part 1: Configure the Firewall in Windows 7

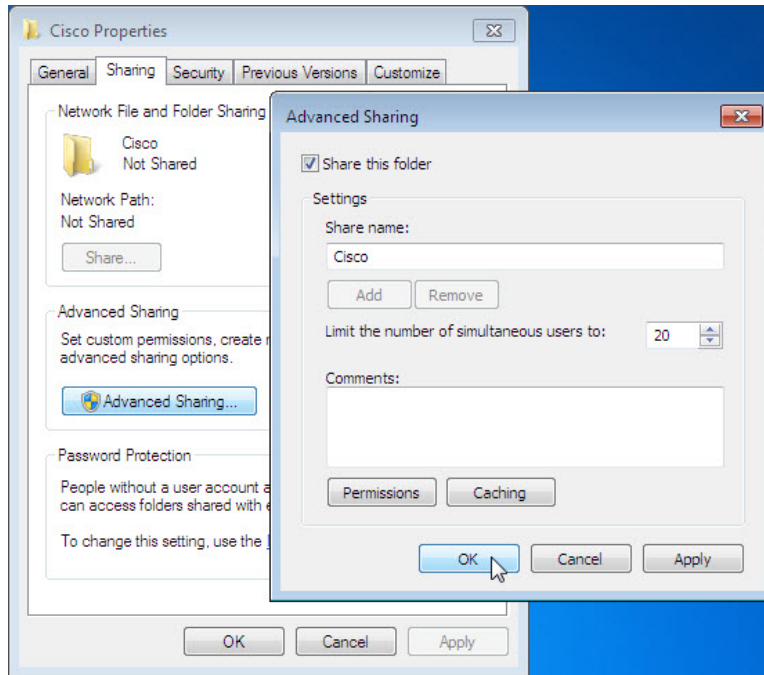
Step 1: Create and share a folder.

- On computer 1, right-click on the desktop and select **New > Folder**. Name the folder **Cisco**.

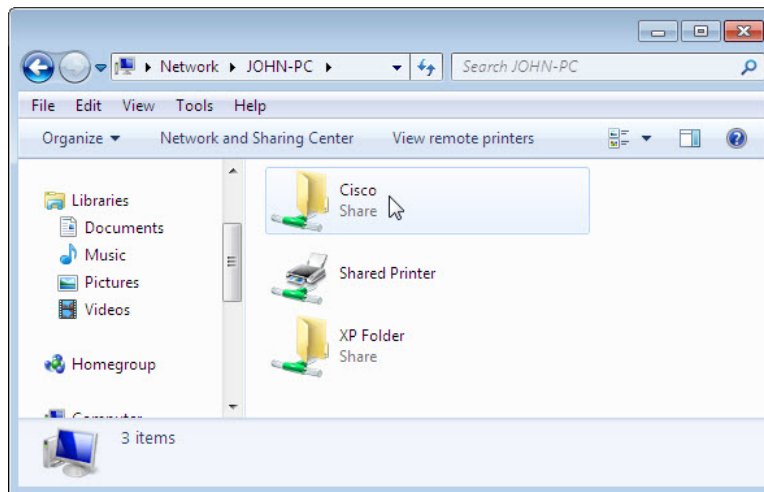


Lab - Configure the Firewall in Windows 7 and Vista

- b. Right-click the Cisco folder, and then select **Share with > Advanced Sharing**. The **Advanced Sharing** window opens. Share the folder. Use the default name **Cisco**.



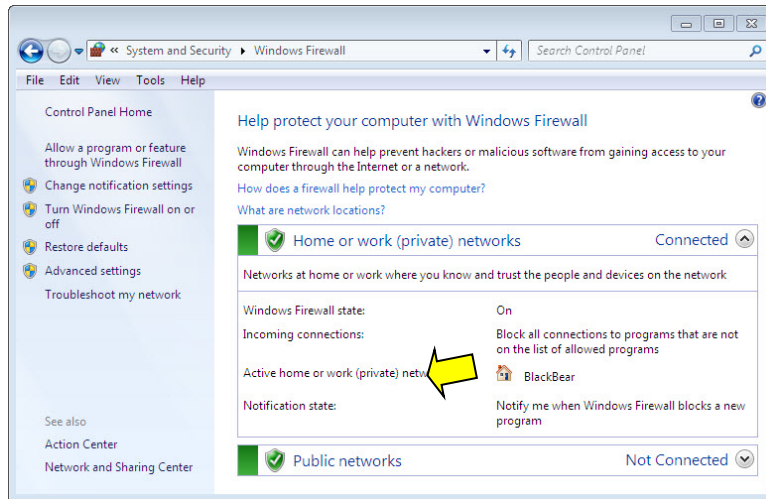
- c. On computer 2, click **Control Panel > Network and Sharing Center**. Click the icon with the network name to which you are connected.



- d. Double-click **computer 1**. Can you see the shared folder **Cisco**?
Note: If you answered no, ask the instructor for help.
- e. Close **Network**.
Note: Use computer 1 for the rest of the lab unless otherwise stated.

Step 2: Open Windows Firewall.

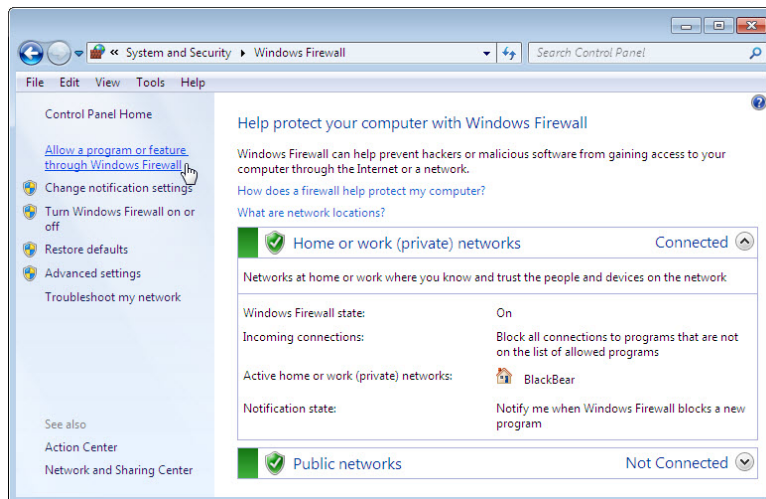
- a. To open the **Windows Firewall**, use the following path:
Control Panel > System and Security > Windows Firewall
- b. The normal state for the Windows Firewall is **On**.



- c. What are the benefits of Windows Firewall?

Step 3: Investigate the Windows Firewall Allowed Programs feature.

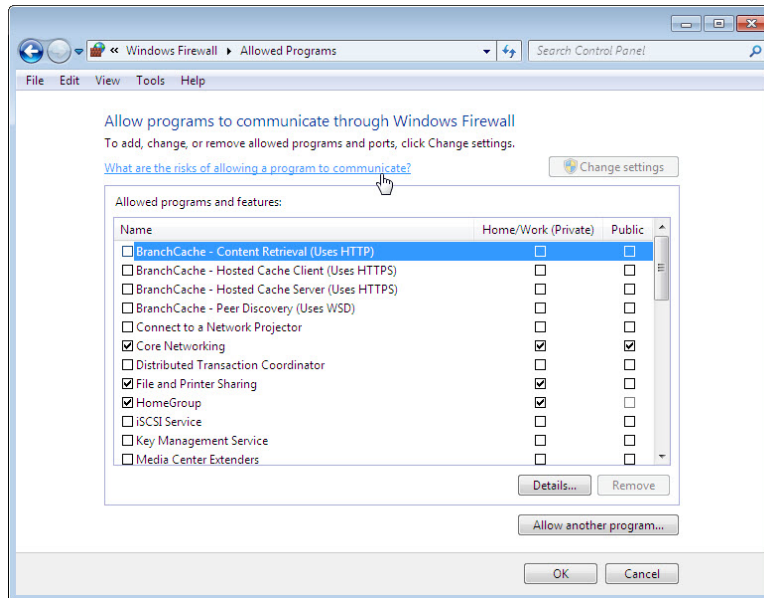
- a. Click **Allow a program or feature through Windows Firewall**.



- b. The **Allowed Programs** window opens. Programs and services that Windows Firewall is not blocking will be listed with a check mark. You can add applications to this list. This may be necessary if your customer has an application that requires outside communications but for some reason the Windows Firewall cannot perform

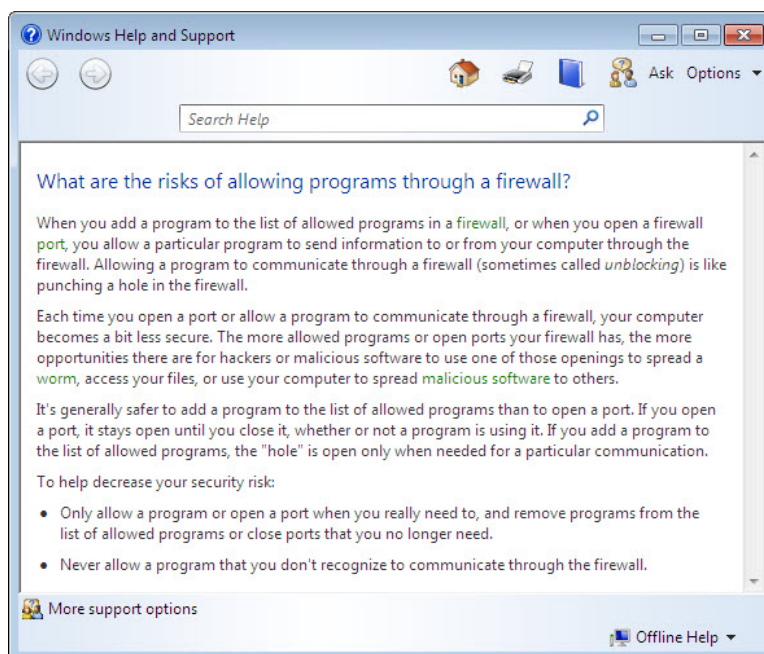
Lab - Configure the Firewall in Windows 7 and Vista

the configuration automatically. You must be logged on to this computer as an administrator to complete this procedure.



- c. Click **What are the risks of allowing a program to communicate?** The **Windows Help and Support** window opens. Creating too many exceptions in your Programs and Services file can have negative consequences.

Describe a negative consequence of having too many exceptions.

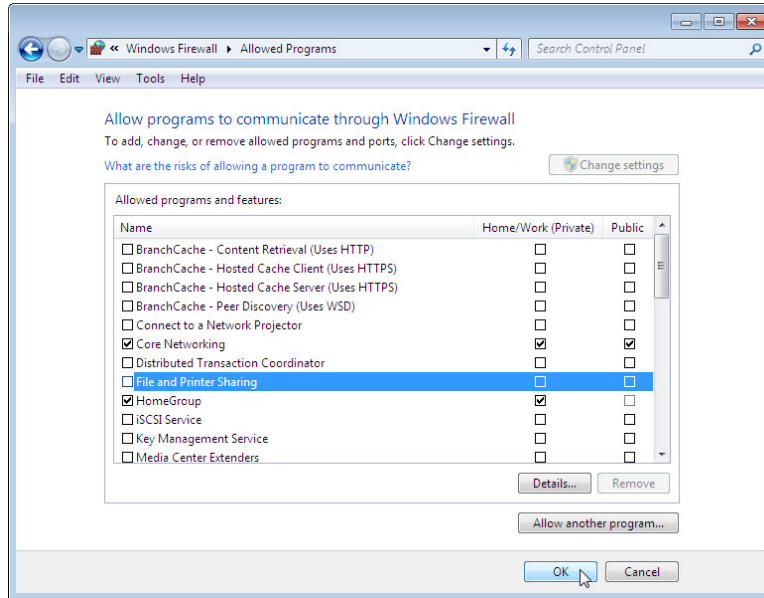


Lab - Configure the Firewall in Windows 7 and Vista

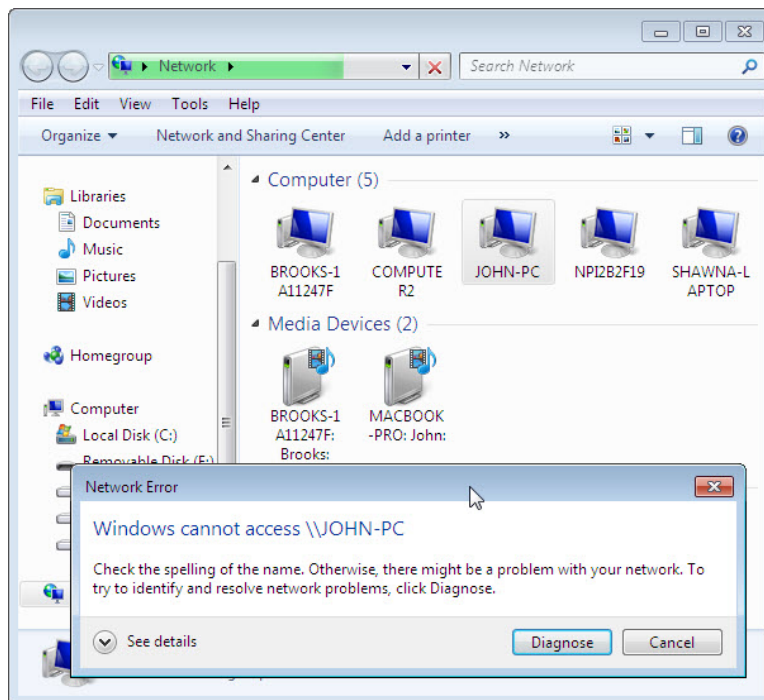
- d. Close the **Windows Help and Support** window.

Step 4: Configure the Windows Firewall Allowed Programs feature.

- a. On computer 1, click the **Allowed Programs** window so it is active. Click **Change settings**, if necessary. To turn off an exception, remove the check mark from **File and Printer Sharing**, and then click **OK**.

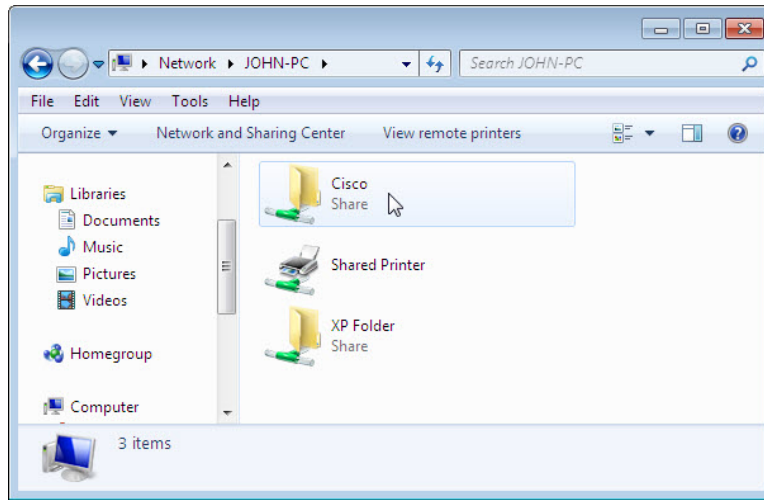


- b. On computer 2, attempt to open a connection to computer 1, using the following path: **Control Panel > Network and Sharing Center > Network** icon. Can you connect to computer 1?



Lab - Configure the Firewall in Windows 7 and Vista

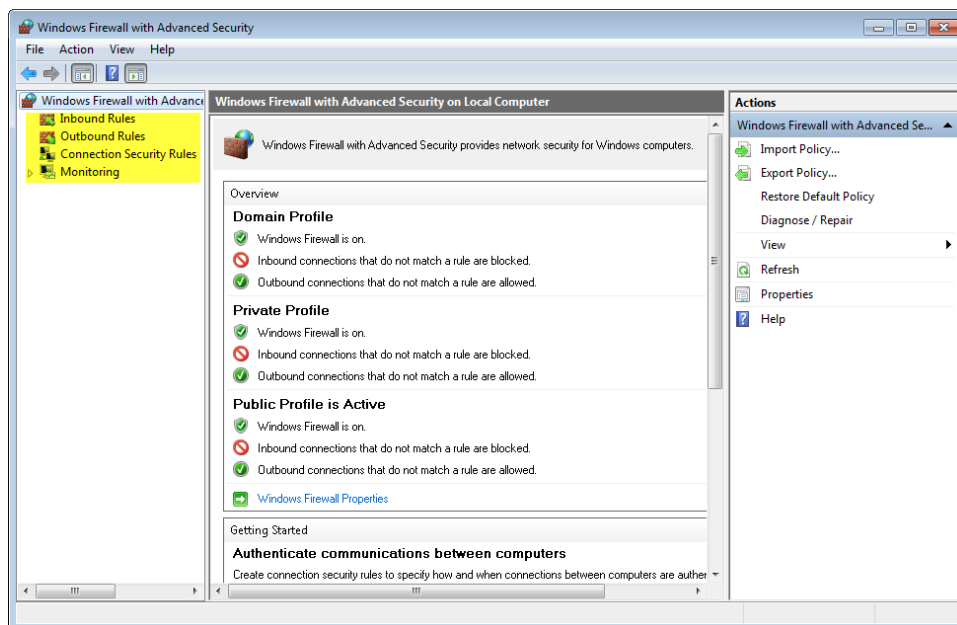
- c. On computer 1, add a check mark to **File and Printer Sharing**. Click **OK**.
- d. On computer 2, refresh the **Network** screen and attempt to connect to computer 1. Can you connect to computer 1?



- e. Log off computer 2. Use computer 1 for the rest of the lab.

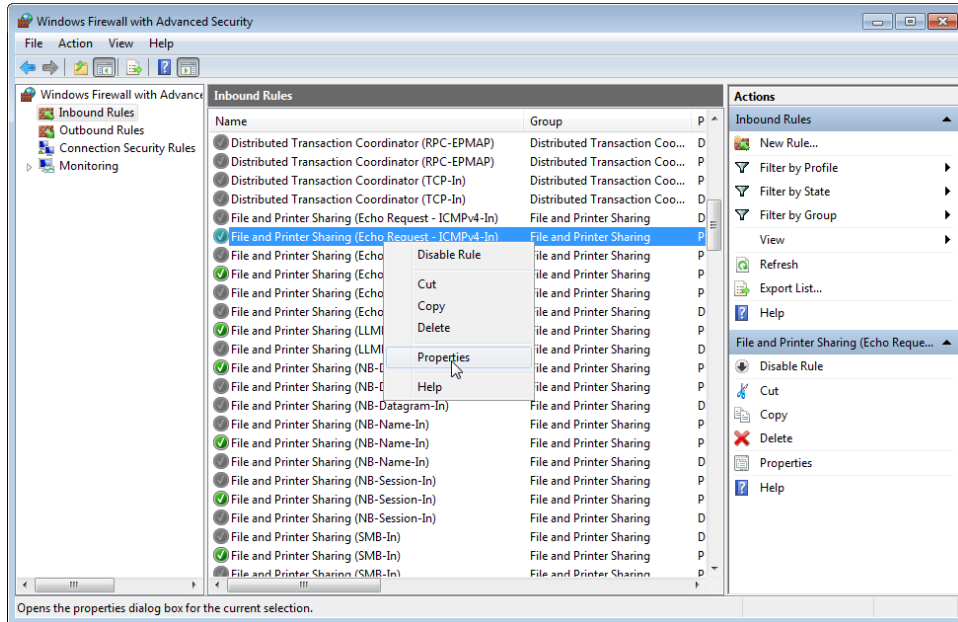
Step 5: Configure Advanced Security features in Windows Firewall.

- a. To configure advanced security, use the following path:
Control Panel > Administrative Tools > Windows Firewall with Advanced Security
- b. In the panel on the left, you can select items to configure **Inbound Rules**, **Outbound Rules**, or **Connection Security Rules**. You can also click **Monitoring** to view the status of configured rules. Click **Inbound Rules**.

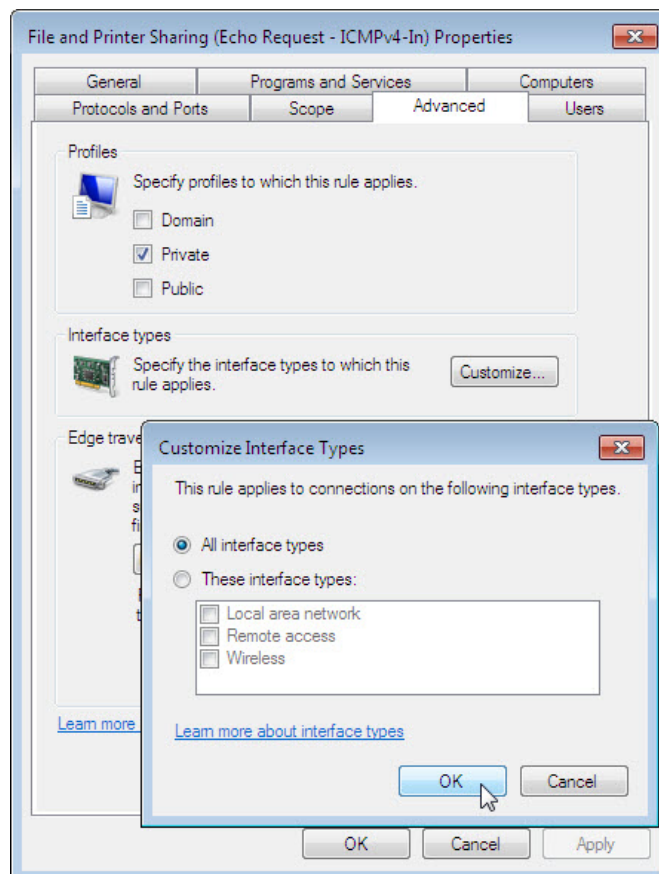


Lab - Configure the Firewall in Windows 7 and Vista

- c. In the middle panel, scroll down until you find the inbound rule named **Files and Printer Sharing (Echo Request – ICMPv4-In)**. Right-click on the rule and select **Properties > Advanced** tab > **Customize**.

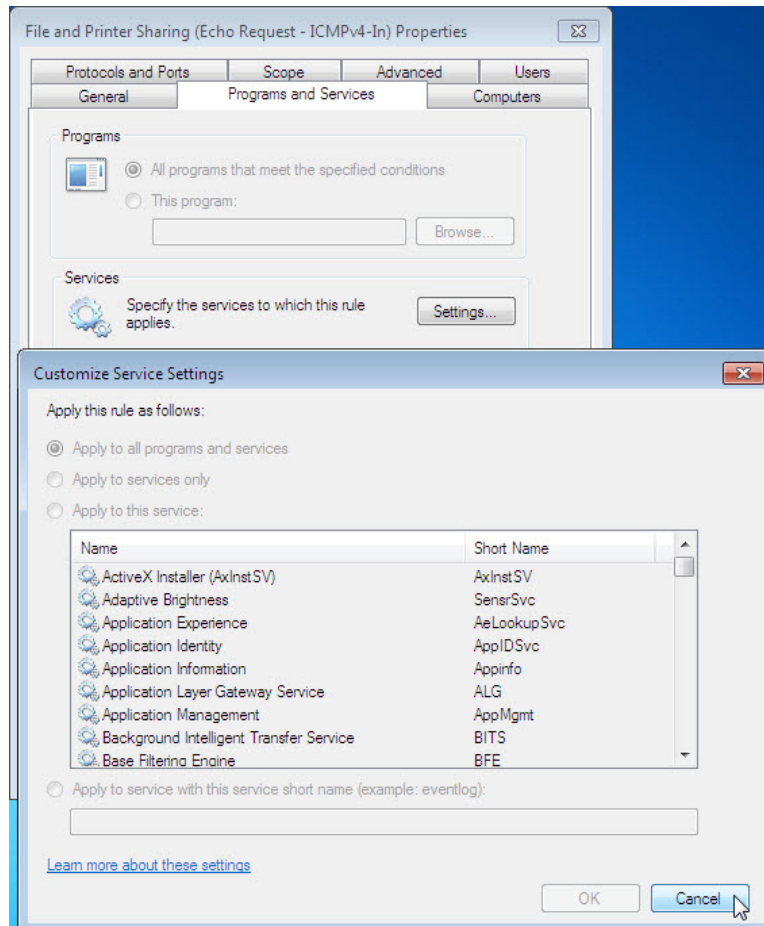


- d. The **Advanced** tab displays the profile(s) used by the computer and the **Customize Interface Types** window displays the different connections configured for your computer. Click **OK**.



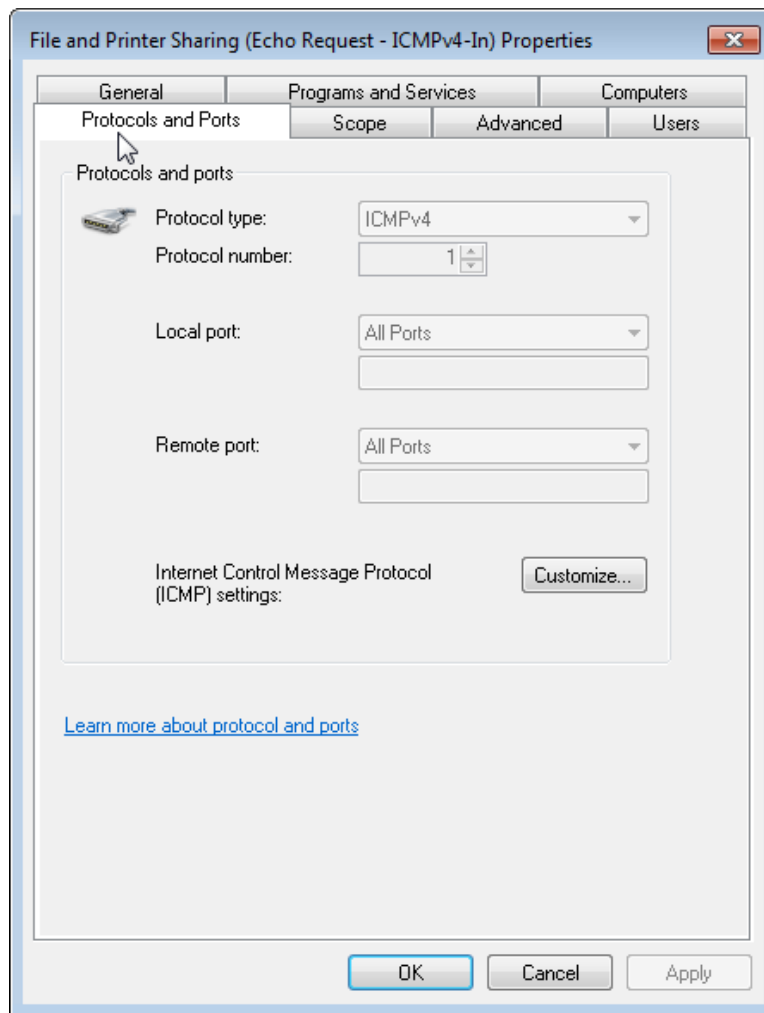
Lab - Configure the Firewall in Windows 7 and Vista

- e. Click the **Programs and Services** tab. Click **Settings....** The **Customize Service Settings** window opens. In the space below, list the short name of four services that are available. When done, click **Cancel**.



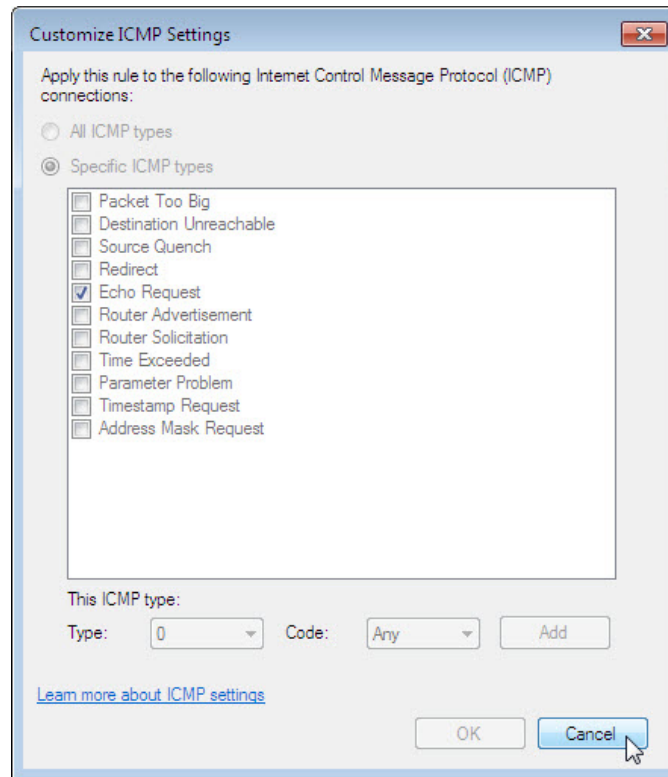
Lab - Configure the Firewall in Windows 7 and Vista

- f. There are many applications that users do not normally see that also need to get through the Windows Firewall to access your computer. These are the network level programs that direct traffic on the network and the Internet. Click **Protocols and Ports** tab.



Lab - Configure the Firewall in Windows 7 and Vista

- g. For the ICMP settings, click the **Customize** button. The **Customize ICMP Settings** window opens. In the example here, allowing incoming echo requests is what allows network users to ping your computer to determine if it is present on the network. In the space below, list four of the Specific ICMP types.

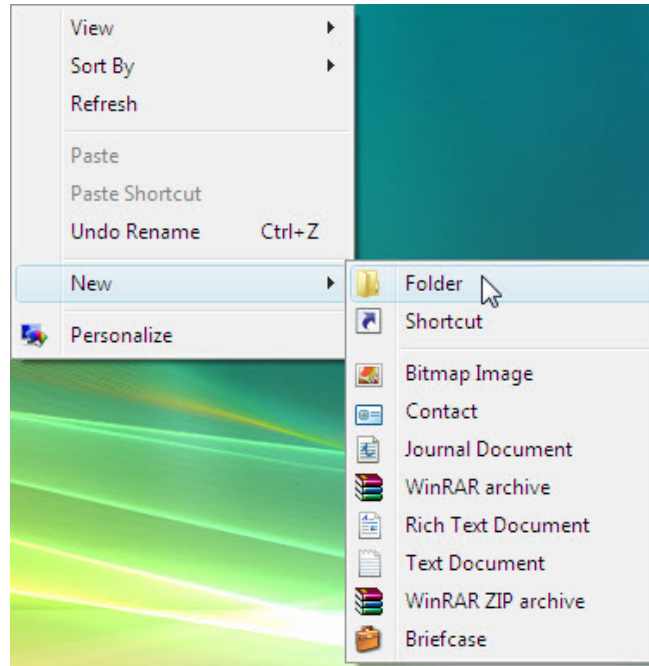


- h. Close all windows.

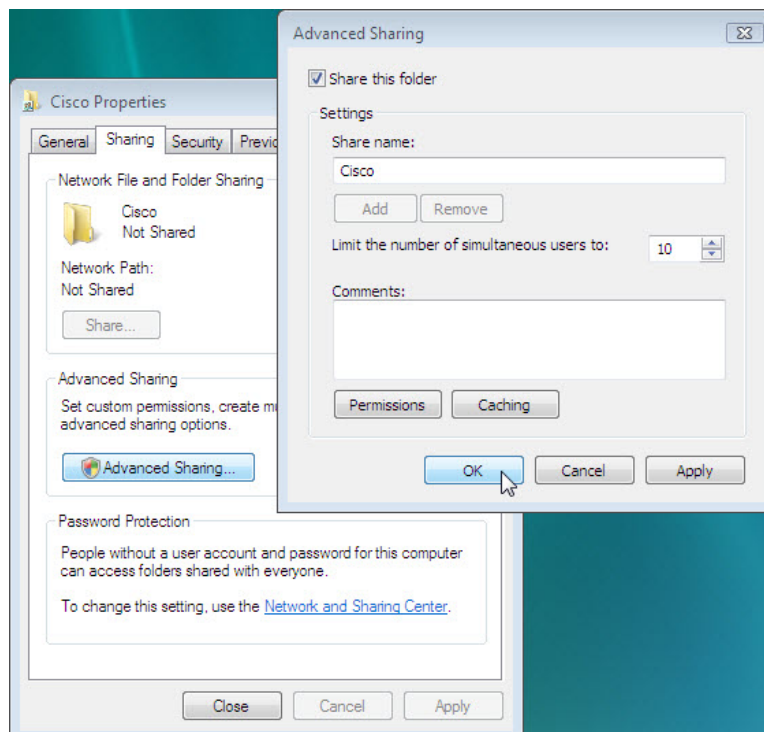
Part 2: Configure the Firewall in Windows Vista

Step 1: Create and share a folder.

- a. On computer 1, right-click on the desktop, select **New > Folder**. Name the folder **Cisco**.

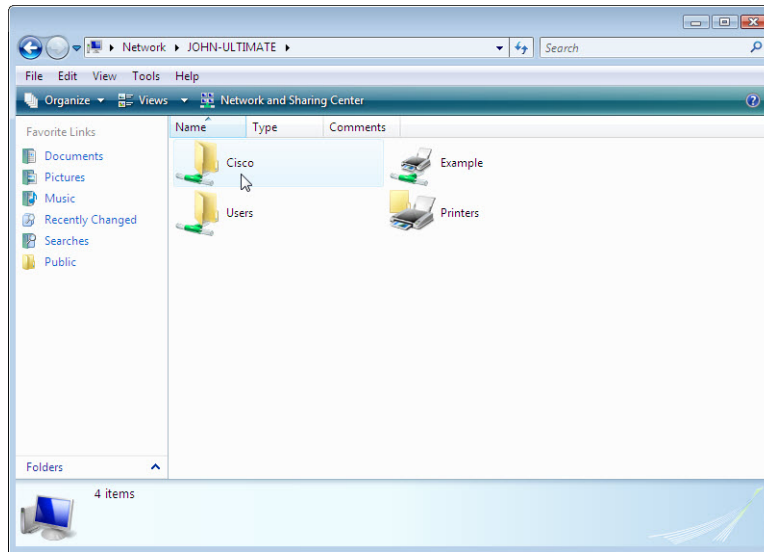


- b. Right-click the **Cisco** folder, and then select **Share > Continue**. The **Advanced Sharing** window opens. Share the folder. Use the default name **Cisco**.



Lab - Configure the Firewall in Windows 7 and Vista

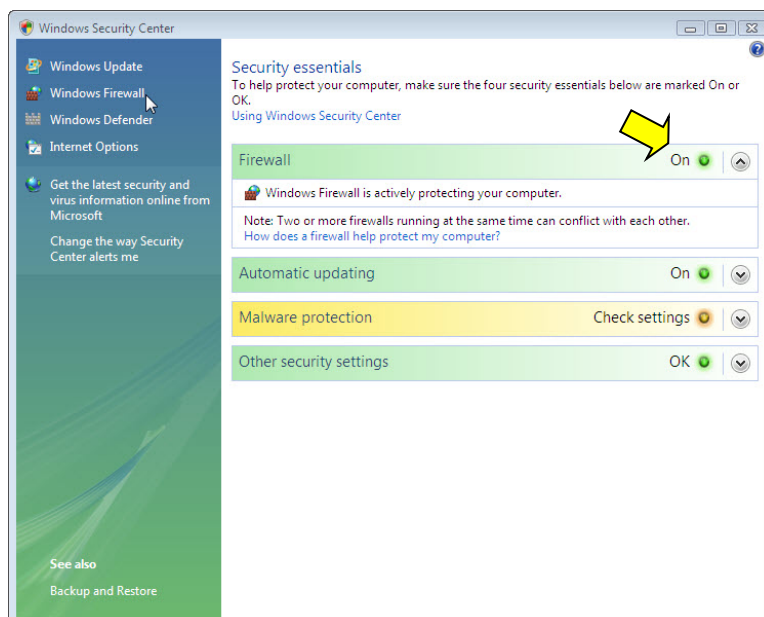
- c. On computer 2 click **Control Panel > Network and Sharing Center > Network** icon (icon with the network name to which you are connected).



- d. Double-click **computer 1**. Can you see the shared folder **Cisco**?
Note: If you answered no, ask the instructor for help.
- e. Close **Network**.
Note: Use computer 1 for the rest of the lab unless otherwise stated.

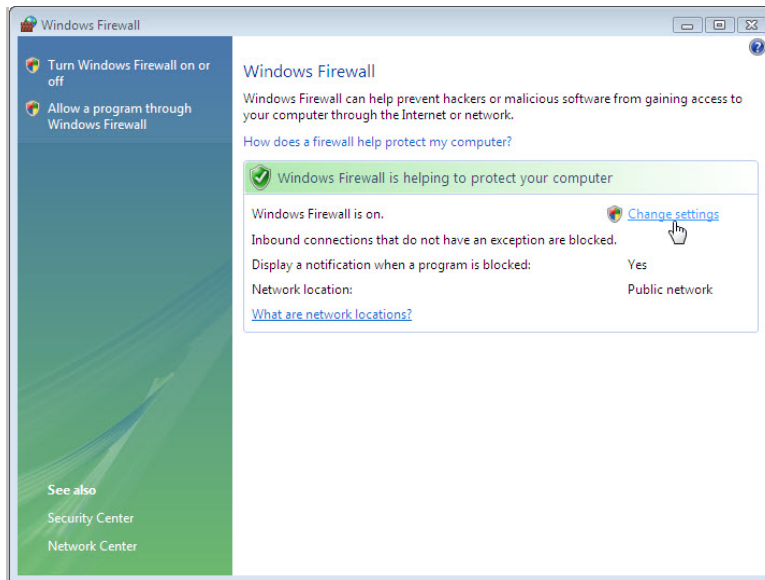
Step 2: Open Windows Firewall.

- a. To open the Windows Firewall, use the following path:
Control Panel > Security Center
- b. The normal state for the Windows Firewall is **On**. Click **Windows Firewall** in the left panel.

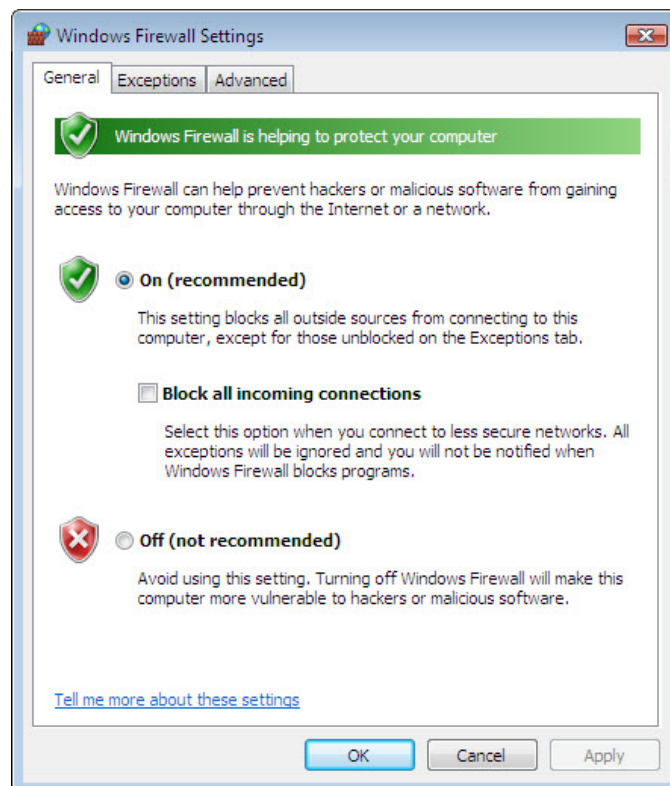


Lab - Configure the Firewall in Windows 7 and Vista

- c. The **Windows Firewall** window opens. Click **Change settings > Continue**.

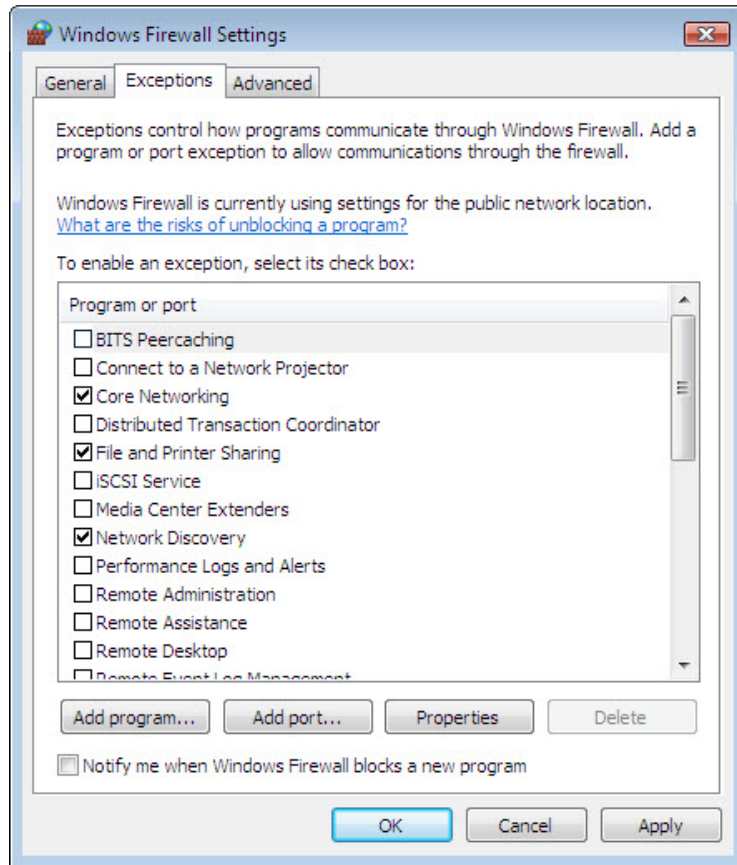


- d. The **Windows Firewall Settings** window opens.
Why is turning off the Windows Firewall not advised?



Step 3: Investigate the Windows Firewall Exceptions tab.

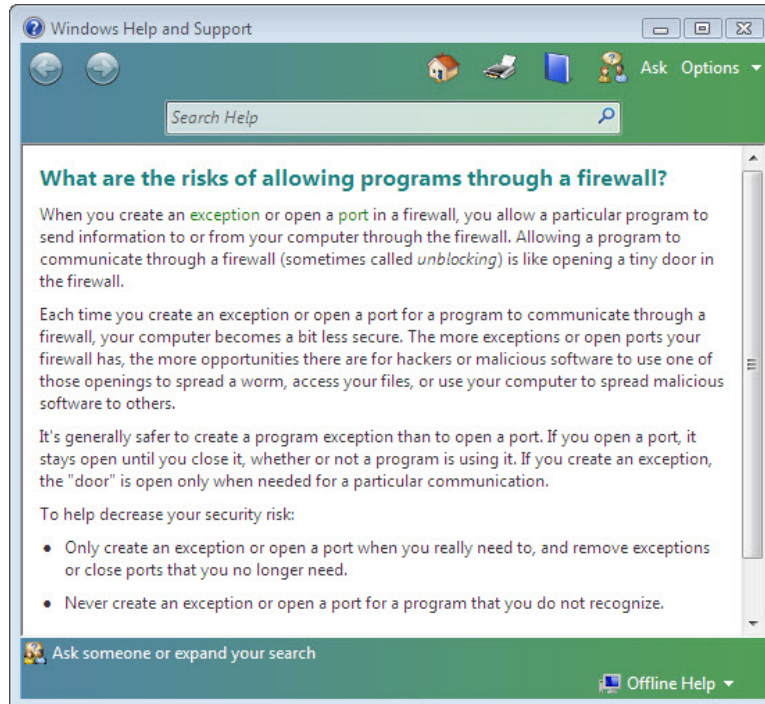
- a. In the **Windows Firewall Settings** window, select the **Exceptions** tab. Programs and services that Windows Firewall is not blocking will be listed with a checkmark. You can add applications to this list. This may be necessary if your customer has an application that requires outside communications but for some reason the Windows Firewall cannot perform the configuration automatically. You must be logged on to this computer as an administrator to complete this procedure. Click **What are the risks of unblocking a program?**



- b. The **Window Help and Support** window opens. Creating too many exceptions in your Programs and Services file can have negative consequences.

Lab - Configure the Firewall in Windows 7 and Vista

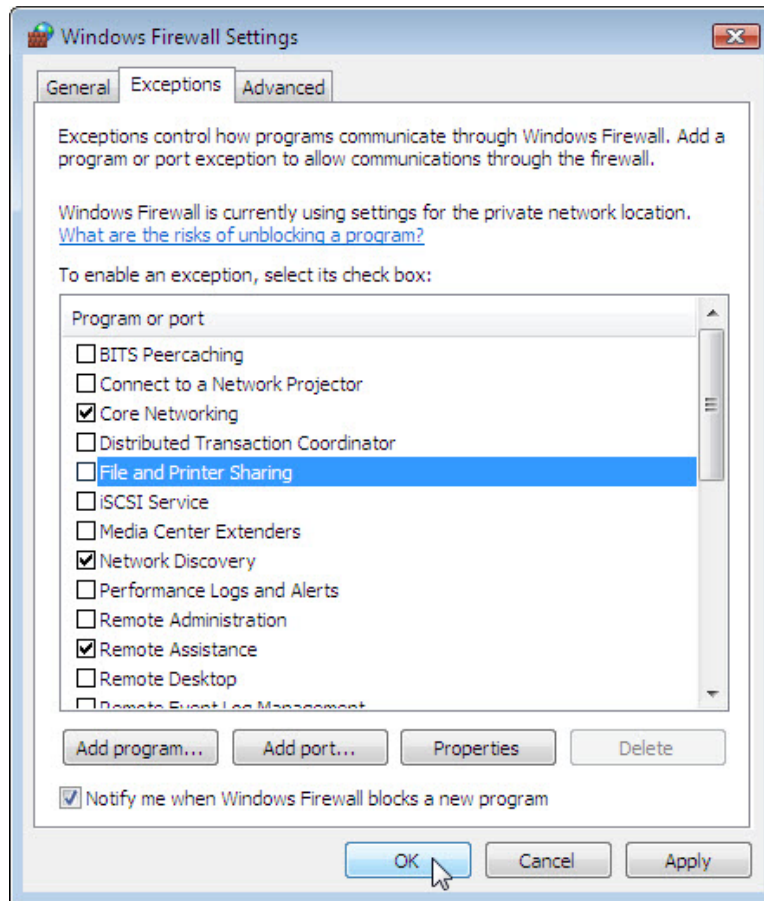
Describe a negative consequence to having too many exceptions.



c. Close the **Windows Help and Support** window.

Step 4: Configure exceptions to the Windows Firewall.

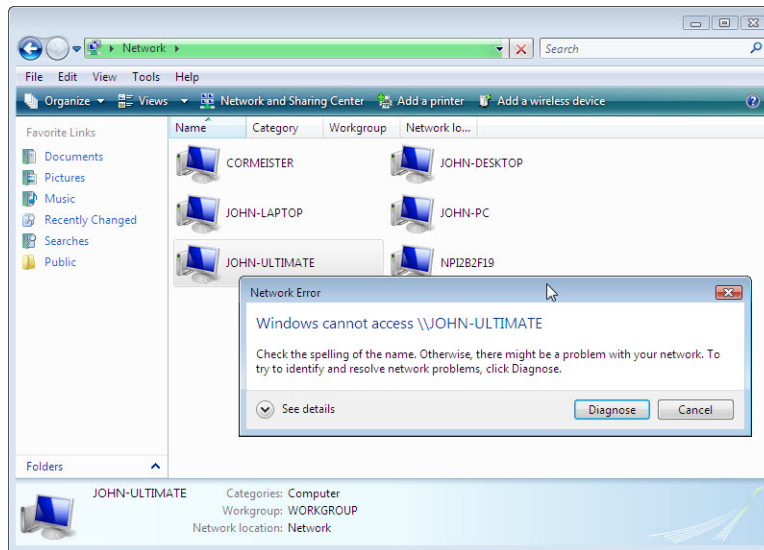
- a. On computer 1, click the **Windows Firewall Settings** window so it is active. Click **Change settings**, if necessary. To turn off an exception, remove the check mark from **File and Printer Sharing**. Click **OK**.



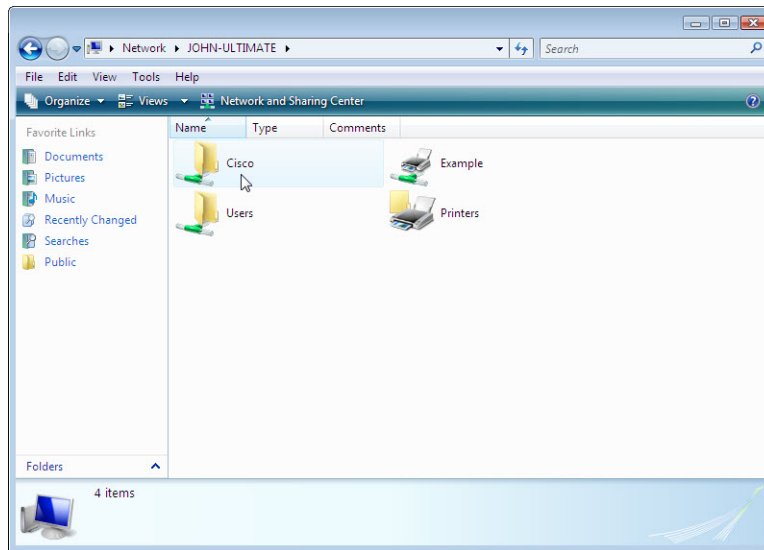
- b. From **computer 2**, attempt to open the network connect to **computer 1**, using the following path: **Control Panel > Network and Sharing Center > Network** icon.

Lab - Configure the Firewall in Windows 7 and Vista

Can you connect to computer 1?



- c. On **computer 1**, add back the exception for **File and Printer Sharing**. Click **OK**.
- d. On **computer 2**, refresh **Network** screen and attempt connect to **computer 1**. Can you connect to computer 1?



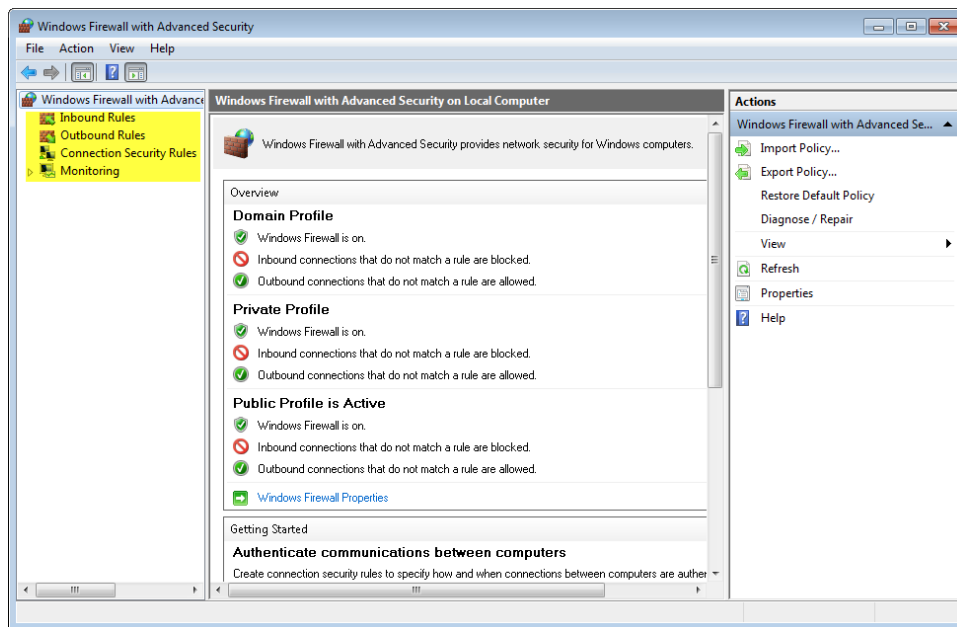
- e. Log off **computer 2**. Use **computer 1** for the rest of the lab.

Step 5: Configure Advanced Security features in Windows Firewall

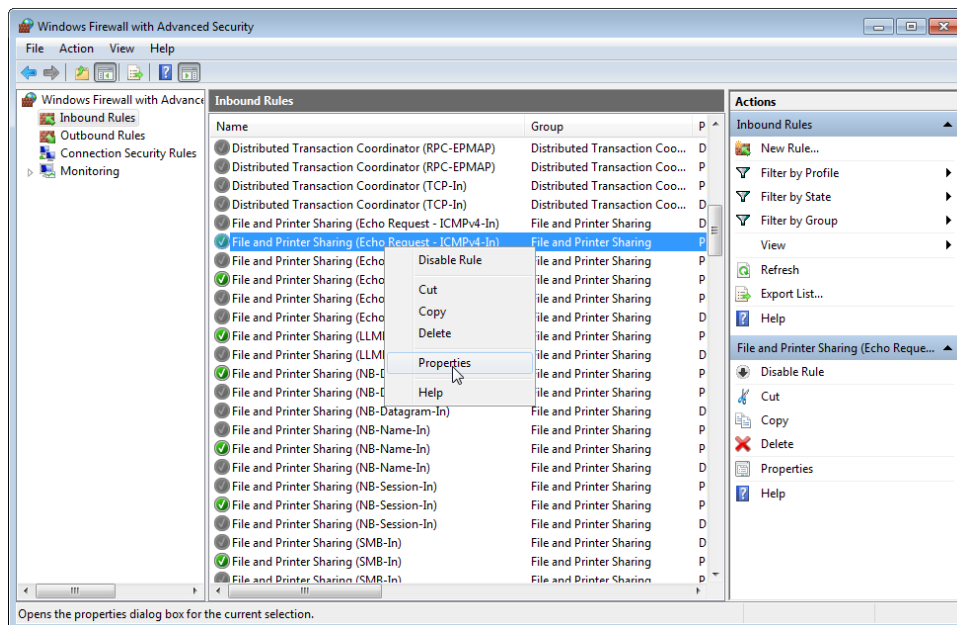
- a. To configure advanced security, use the following path:
Control Panel > Administrative Tools > Windows Firewall with Advanced Security

Lab - Configure the Firewall in Windows 7 and Vista

- b. In the panel on the left, you can select items to configure **Inbound Rules**, **Outbound Rules**, or **Connection Security Rules**. You can also click **Monitoring** to view the status of configured rules. Click **Inbound Rules**.

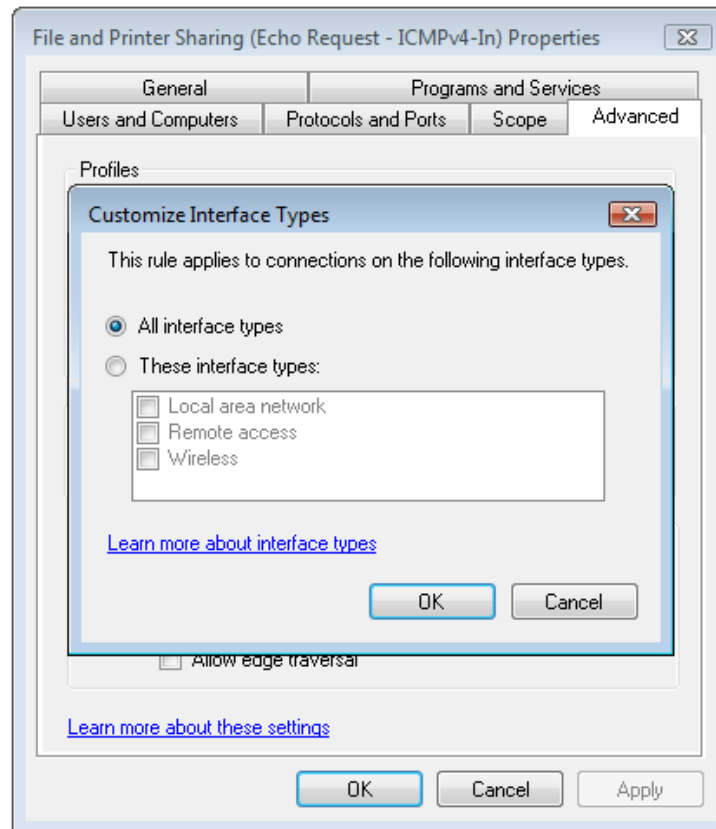


- c. In the middle panel, scroll down until you find the inbound rule named **Files and Printer Sharing (Echo Request – ICMPv4-In)**. Right-click on the rule and select **Properties > Advanced tab > Customize**.



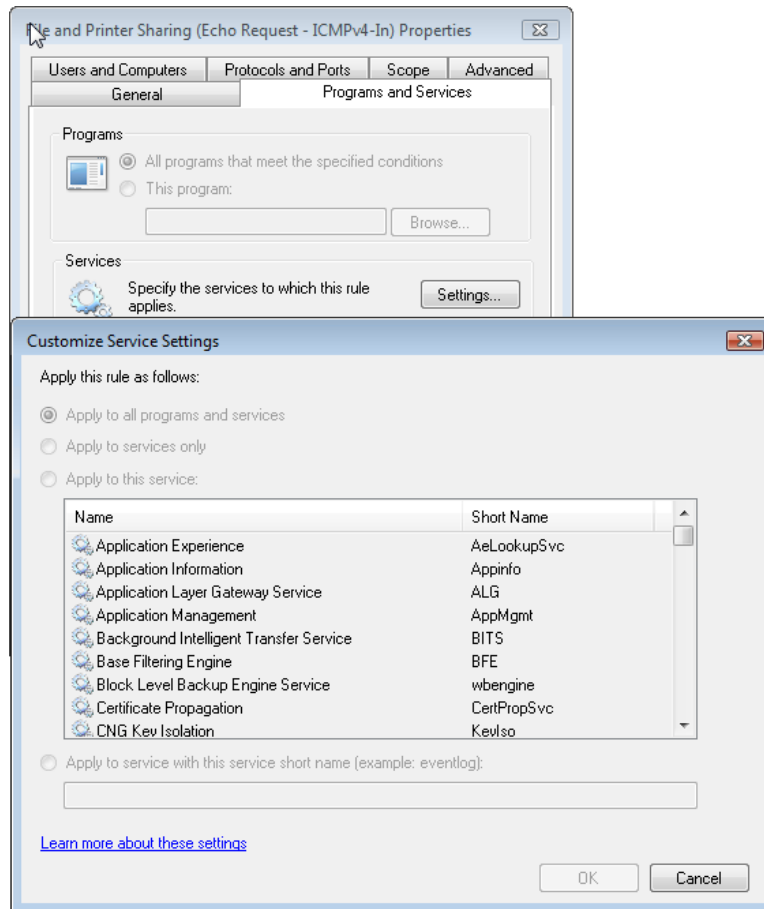
Lab - Configure the Firewall in Windows 7 and Vista

- d. The **Advanced** tab displays the profile(s) used by the computer and the **Customize Interface Types** window displays the different connections configured for your computer. Click **OK**.



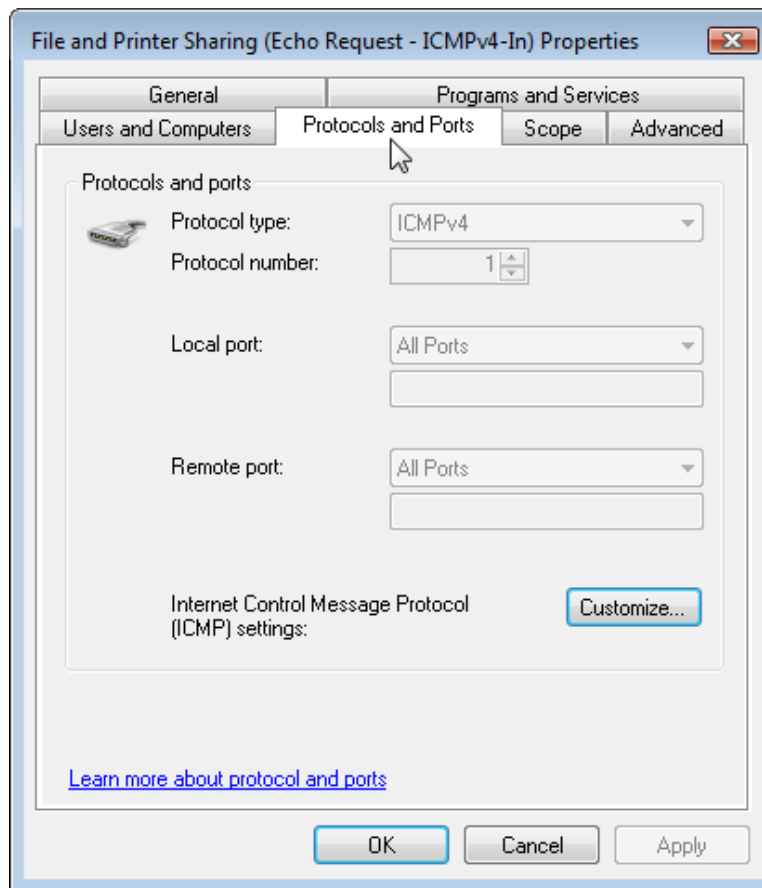
Lab - Configure the Firewall in Windows 7 and Vista

- e. Click the **Programs and Services** tab. Click **Settings....** The **Customize Service Settings** window opens. In the space below, list the short name of four services that are available. When done, click **Cancel**.



Lab - Configure the Firewall in Windows 7 and Vista

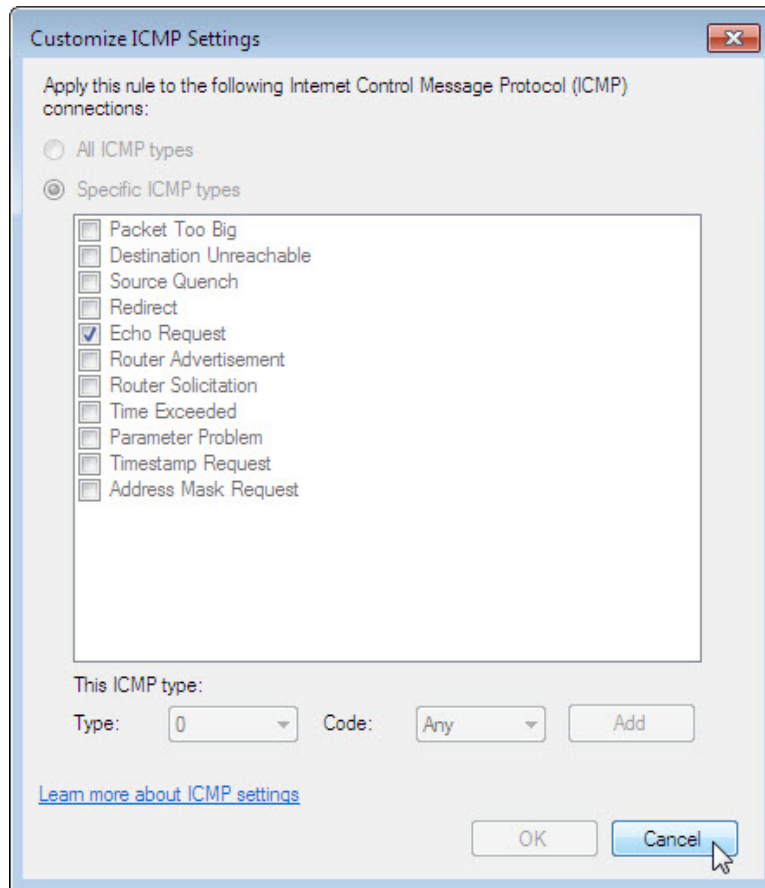
- f. There are many applications that users do not normally see that also need to get through the Windows Firewall to access your computer. These are the network level programs that direct traffic on the network and the Internet. Click **Protocols and Ports** tab.



- g. For the ICMP settings, click the **Customize** button. The **Customize ICMP Settings** window opens. In the example here, allowing incoming echo requests is what allows network users to ping your computer to determine if it is present on the network.

Lab - Configure the Firewall in Windows 7 and Vista

List four of the Specific ICMP types.



h. Close all windows.